



EMBOSSING CYLINDERS – TEMPLATE



House brand _____

Length of house brand _____ [mm]

Company _____

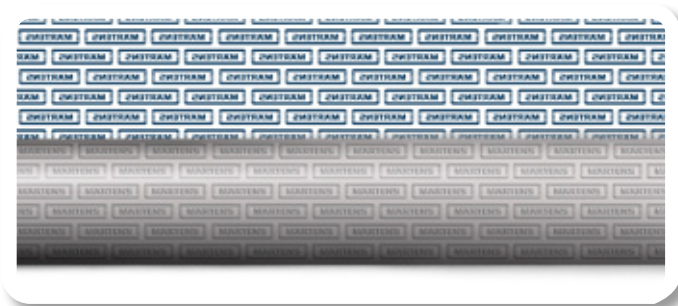
Contact Person _____

Sketch of house brand:



Remark:

House brand appears at your product as the embossing cylinder

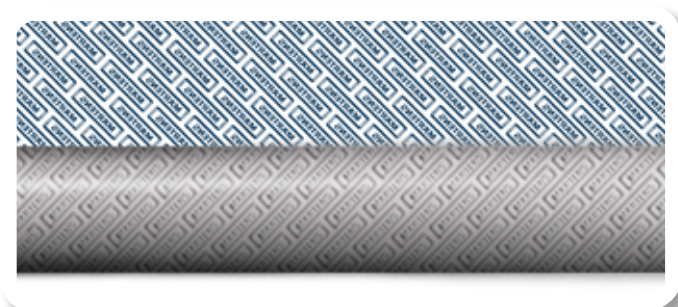


↑
running direction



House brand:

- > axial
- > staggered

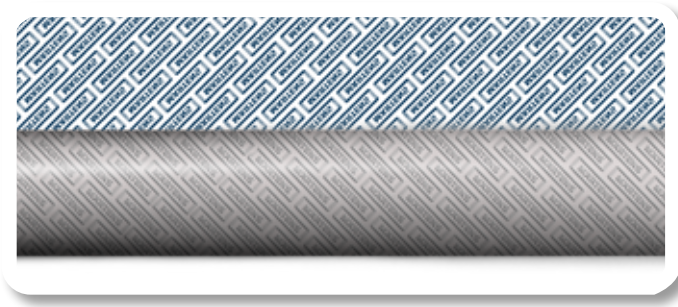


↑
running direction



House brand:

- > staggered
- > diagonal right-hand
- > angle: _____ °
(e. g. = 45°)

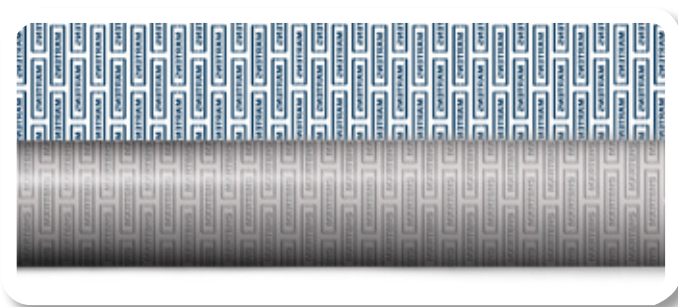


↑
running direction



House brand:

- > staggered
- > diagonal left-hand
- > angle: _____ °
(e. g. = 45°)



↑
running direction



House brand:

- > longitudinal
- > staggered

accepted _____

date _____

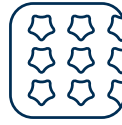
STRIKE!

OUR PRODUCT GROUPS AT A GLANCE:



ROD NETWORK BELTS: Made in music wire, stainless steel or K2390 steel, our rod network belts offer you all the advantages of open grid design and precise belt run.

- > **Rod network belts are among the most popular conveyor solutions.**
- > Small deflection radii
- > Grid structure for free liquid and air flow
- > Guided by various means



SILICONE MOULDING BELTS: Märtens silicone moulding conveyor belts are available with customised surface structures and features tailor-made for your products.

- > **The basis for your product ideas.**
- > Temperature resistant up to 180° C
- > Excellent release properties
- > Shaped and structured according to customer specifications



METAL CONVEYOR BELTS: Our metal conveyor belts made from round or flat wire spirals are designed for universal use.

- > **These multi-purpose conveyors are particularly suitable for high-temperature applications.**
- > With looped or welded belt edges
- > Permeable and temperature resistant
- > Made in stainless steel



TIMING BELTS: Made of thermoplastic or duroplastic polyurethane, they allow for precise conveyance

- > **They are particularly suitable in cases where every millimetre counts.**
- > Exact conveyance
- > Straight running
- > Diverse designs



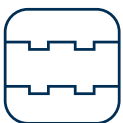
PLASTIC CONVEYOR BELTS: We offer conveyor belts with a variety of fabrics, including polyurethane, PVC, silicone, etc.

- > **They have been specifically designed for applications where high processing quality is essential.**
- > Food processing industry
- > Processing conveyor systems
- > Packaging technology



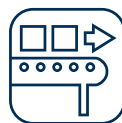
ACCESSORIES: Our comprehensive range of additional services and accessories covers everything required for safe and reliable system operation.

- > **For safe and secure system operation.**
- > Drive and deflection components
- > Welding equipment
- > Assembly solutions



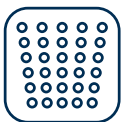
MODULAR CONVEYOR BELTS: Made of polyethylene, polypropylene or polyacetal, they offer robust flexibility.

- > **With their modular design, they are the most convertible of belts.**
- > Easy to extend/shorten
- > For direct contact with foodstuffs



SPECIAL MACHINES: We solve all your problems relating to process technology, based on expertise and years of practical experience.

- > **Real-world solutions for practical application.**
- > Curved conveyor systems
- > Separating plants
- > Made in Germany



SEPARATING BELTS: The elasticated silicone material allows for flexible width adjustment of the product over separating distance.

- > **Advanced solution for special applications.**
- > Product separation
- > Product combination
- > With anti-stick surface



Do you want to make progress?
Please let us know!

We are happy to answer your questions, provide additional material or make you a non-binding offer.

Märtens Transportbänder GmbH

Lise-Meitner-Straße 18, D-24941 Flensburg
phone: +49 461 9047-0, fax: -150
e-mail: info@maertens.de, www.maertens.de

Ein Unternehmen der Metall-Chemie Gruppe **MIC**